

Riverside Offices To Let
3,259 – 59,537 sq ft



10
Lower Thames
Street

—

London EC3



Riverside office space in a landmark building

With an on-site gym, café and panoramic river views, 10 Lower Thames Street really does have it all.

The office floors have been fully refurbished offering light, bright efficient work space.



Ground floor café



Lower ground floor gym facility

Accommodation

Floor	Sq Ft	Sq M	Specification
3rd	21,152	1,965.1	Newly Refurbished with terrace
2nd	23,496	2,182.8	Fitted Out
1st (North)	11,630	1,080.5	Fitted Out
Ground	3,259	302.8	Fitted Out
Total	59,537	5,531.2	

Specification



Refurbished reception, entrance & common parts



Ground floor café amenity / gym facilities



Commissionaire & 24-hour security



Fully accessible raised floors



Bike racks & shower facilities



Panoramic river views



Air-conditioning



Roof Terrace (3rd floor)



New LED Lighting



Car parking available (by separate arrangement)



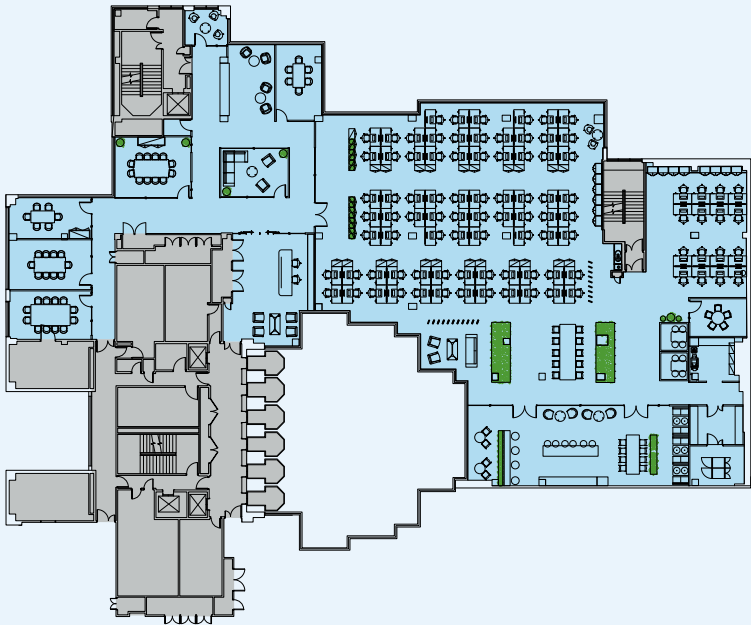
3rd floor

Indicative Space Planning

1st Floor (North) Corporate Layout

11,630 sq ft / 1,080.5 sq m

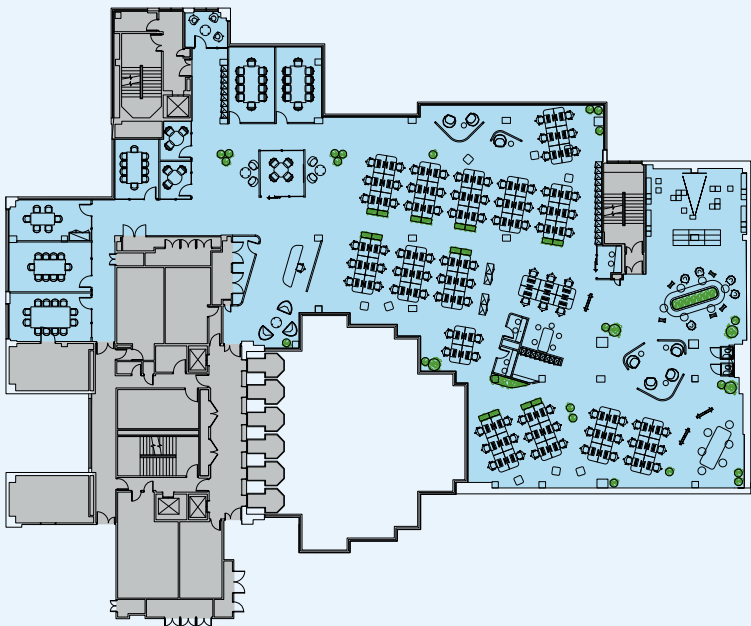
Open plan desks	95
3 person meeting room	01
5 person meeting room	01
6 person meeting rooms	02
10 person meeting room	01
12 person meeting rooms	02
Reception	01
Total working positions	95



1st Floor (North) Creative Layout

11,630 sq ft / 1,080.5 sq m

Open plan desks	72
3 person meeting room	01
4 person meeting room	01
10 person meeting rooms	02
Zoom rooms	03
Reception	01
Total working positions	72

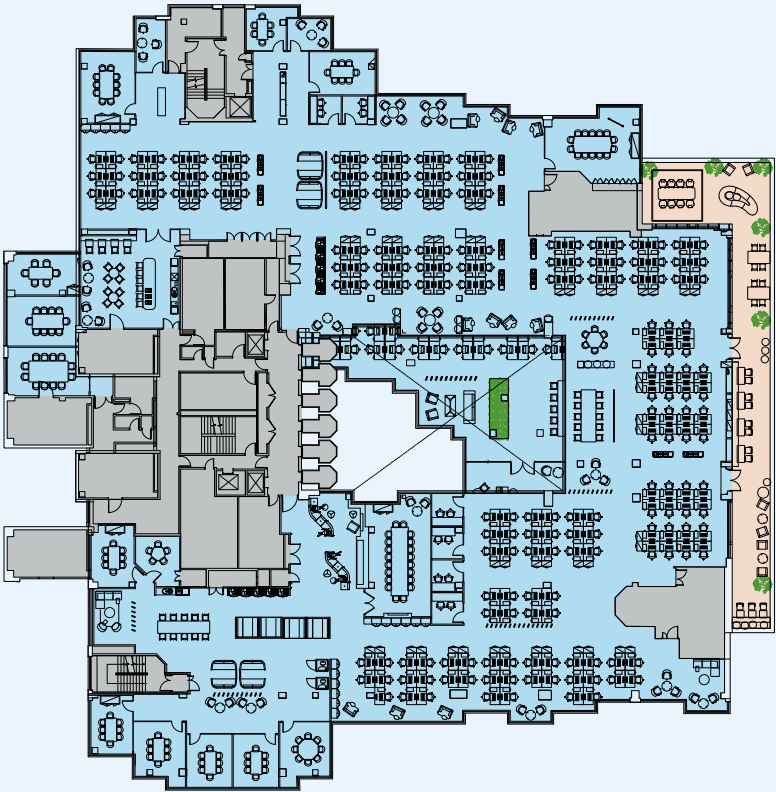


Indicative Space Planning

3rd Floor Corporate Layout

21,152 sq ft / 1,965.1 sq m

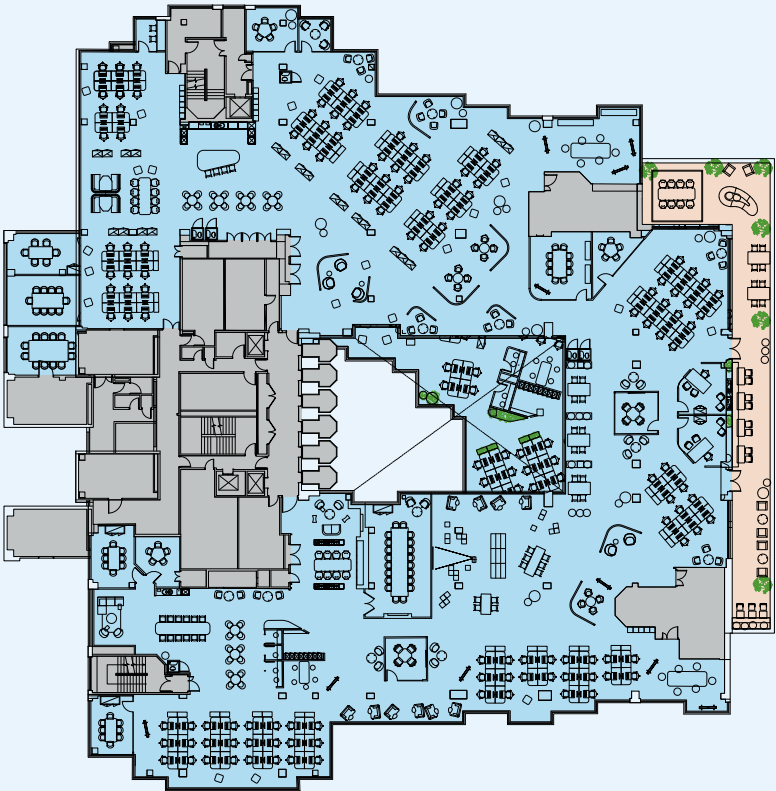
Open plan desks	195
2 person meeting rooms	02
3 person meeting rooms	02
4 person meeting room	01
5 person meeting room	01
6 person meeting room	01
8 person meeting rooms	07
14 person meeting room	01
20 person meeting room	01
Total working positions	195



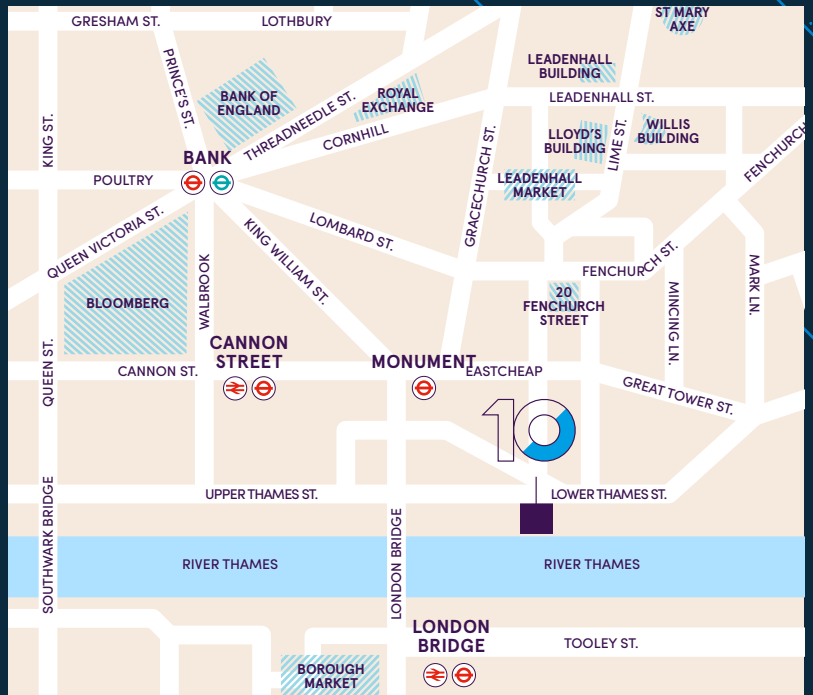
3rd Floor Creative Layout

21,152 sq ft / 1,965.1 sq m

Open plan desks	128
2 person meeting room	01
3 person meeting room	01
4 person meeting rooms	02
5 person meeting rooms	03
8 person meeting rooms	02
10 person meeting room	01
20 person meeting room	01
Total working positions	128



Located on the bank of the River Thames surrounded by a plethora of café's, bars and restaurants



Connections

The Building has excellent transport links from Monument, Cannon Street, Bank & London Bridge providing fast and frequent services across London and the south east.



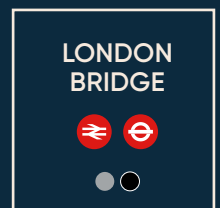
3 mins



5 mins



6 mins



9 mins

Viewing

Strictly through joint sole letting agents.

Jonathan Beilin
07976 392 016
jb@newtonperkins.com

Harry Woods
07884 602 870
hw@newtonperkins.com

NEWTON PERKINS

Terms

Upon application.

Tom Fayers
07973 821 247
tom.fayers@cushwake.com

George Homer
07584 118 298
george.homer@cushwake.com

CUSHMAN & WAKEFIELD

Cushman & Wakefield and Newton Perkins copyright 2022. No warranty or representation, express or implied, is made to the accuracy or completeness of the information contained herein, and same is submitted subject to errors, omissions, change of price, rental or other conditions, withdrawal without notice, and to any special listing conditions imposed by the property owner(s). As applicable, we make no representation as to the condition of the property (or properties) in question. July 2022.

Designed and produced by Cre8te - 020 3468 5760 - cre8te.london